

CERTIFICATE OF LOCATION OF GOVERNMENT CORNER

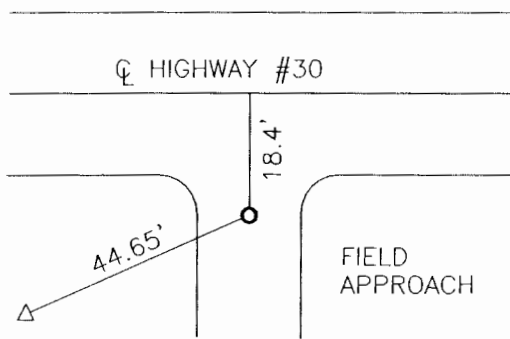
NORTHEAST Corner of Section 14, Township 106, Range 42, 5TH P.M.

STATE OF MINNESOTA, County of MURRAY

At the corner location shown on the sketch:

- On _____ found a _____
DATE
- left monument as found, lowered monument, removed monument (explain)
- On 05-15-2006 placed a 1" IRON PIPE WITH SEAL #11943
DATE

SKETCH OF REFERENCE TIES



Top center of pedestal SW 44.65'

Minnesota State Plane Coordinate
System Minnesota South Zone.
NAD83 (1996)

N: 695611.209
E: 2139521.457

Statement of evidence relative to this corner location is on back of page.

I hereby certify that this document and the data contained herein was prepared by me or under my direct supervision.

Lyle E Moser 2-28-07
SIGNATURE DATE
Registration No. 11943

- Land Surveyor, Professional Engineer
- County Surveyor, County Engineer

OFFICE OF THE COUNTY RECORDER
County of _____

I hereby certify that this document was filed in the Co. Recorders office at _____ M on the _____ day of _____ A.D. 20__

County Recorder _____

By _____, Deputy

DOCUMENT NO. _____

Statement of Evidence

In 1866, J. W. Bishop did the original subdivision of the township.

On May 15, 2006 Bueltel-Moseng Land Surveying dug by hand and found nothing. We set a 1" iron pipe with seal #11943 in line with fence to the south and 18.4 feet south of the centerline of Highway #30 per the highway notes.